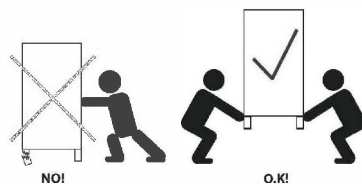
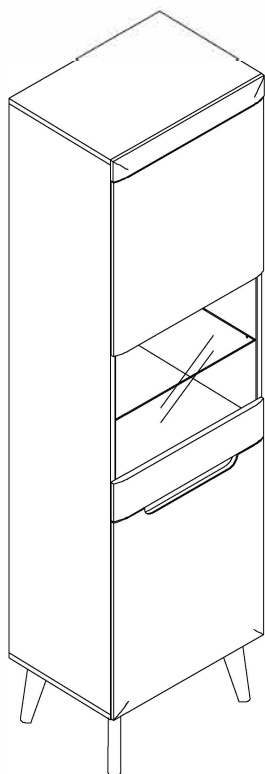


FJORD

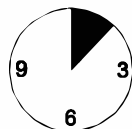
NWT53



24.4.2017

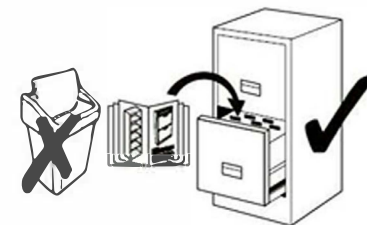
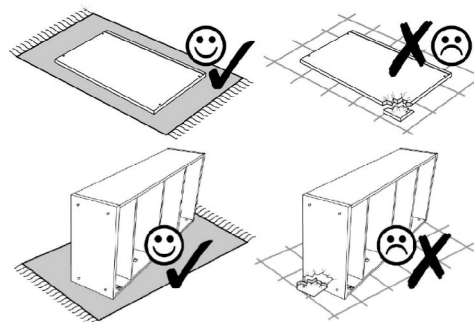
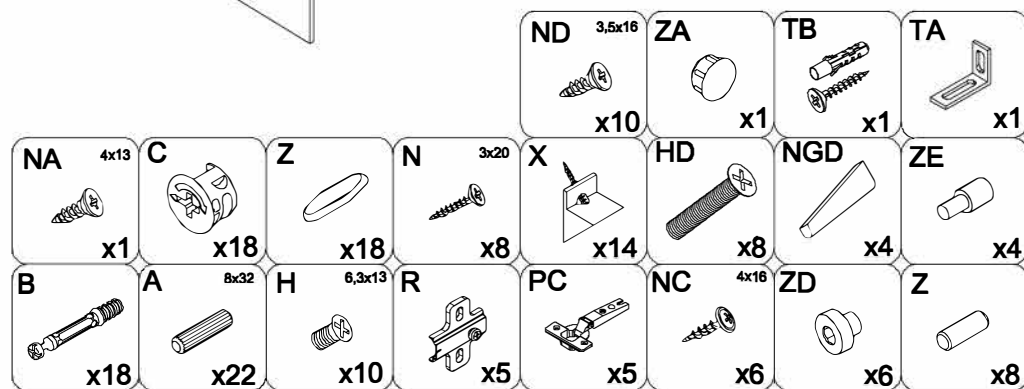
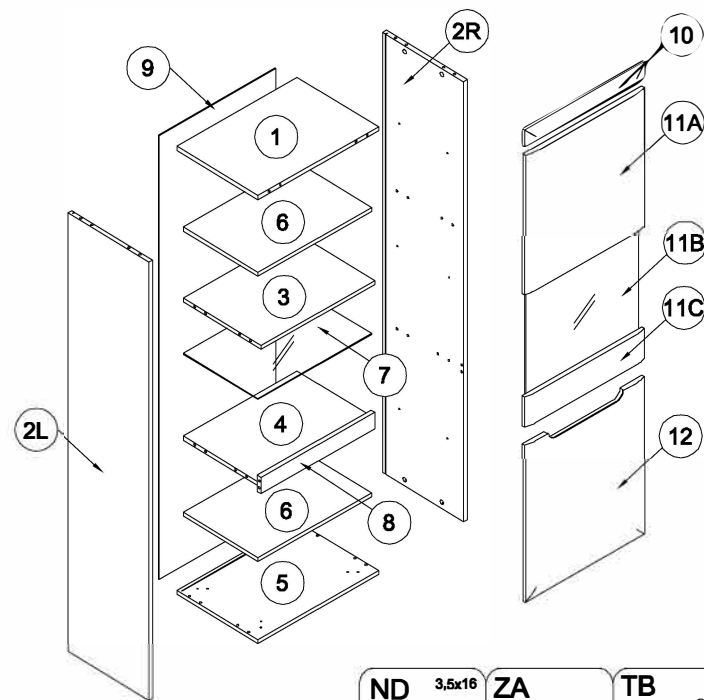
- D** Montageanleitung
- FR** Notice de montage
- NL** Handleiding voor de montage
- CZ** Montážní návod
- HU** Szerelési útmutató
- TR** Montaj talimatı

- GB** Assembly Instructions
- IT** Istruzioni di montaggio
- PL** Instrukcja montażu
- SK** Návod na montáž
- RO** Instrucțiuni de montaj
- RU** Инструкции по монтажу

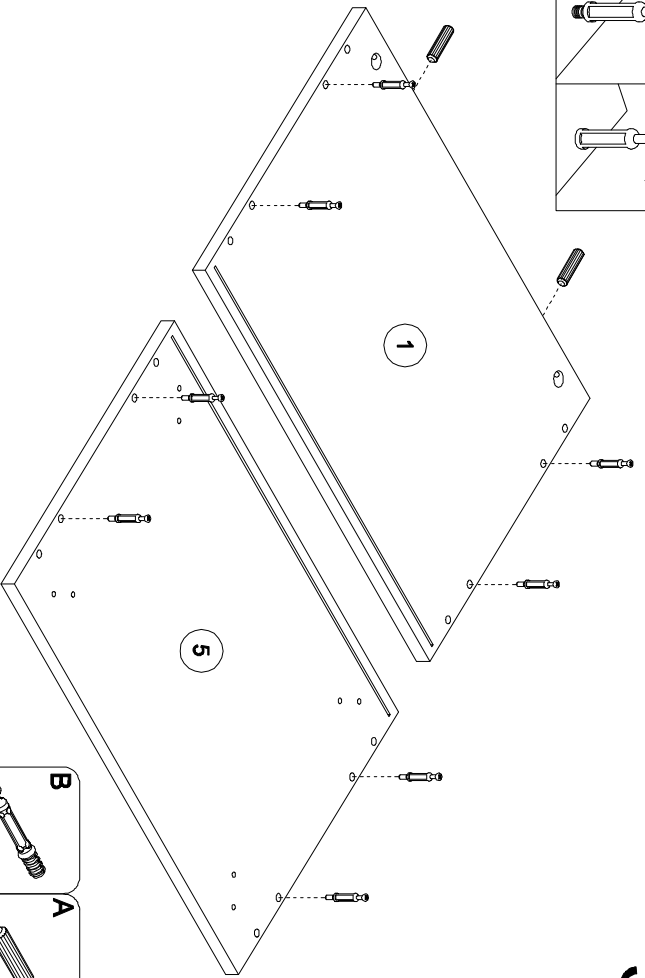
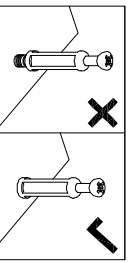


20 min.

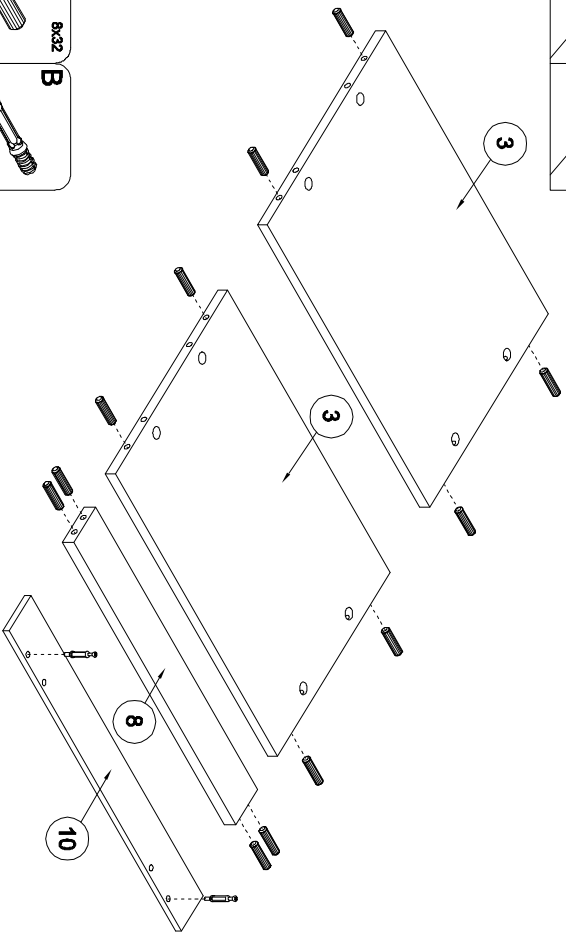
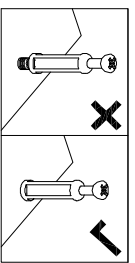
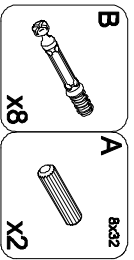
1



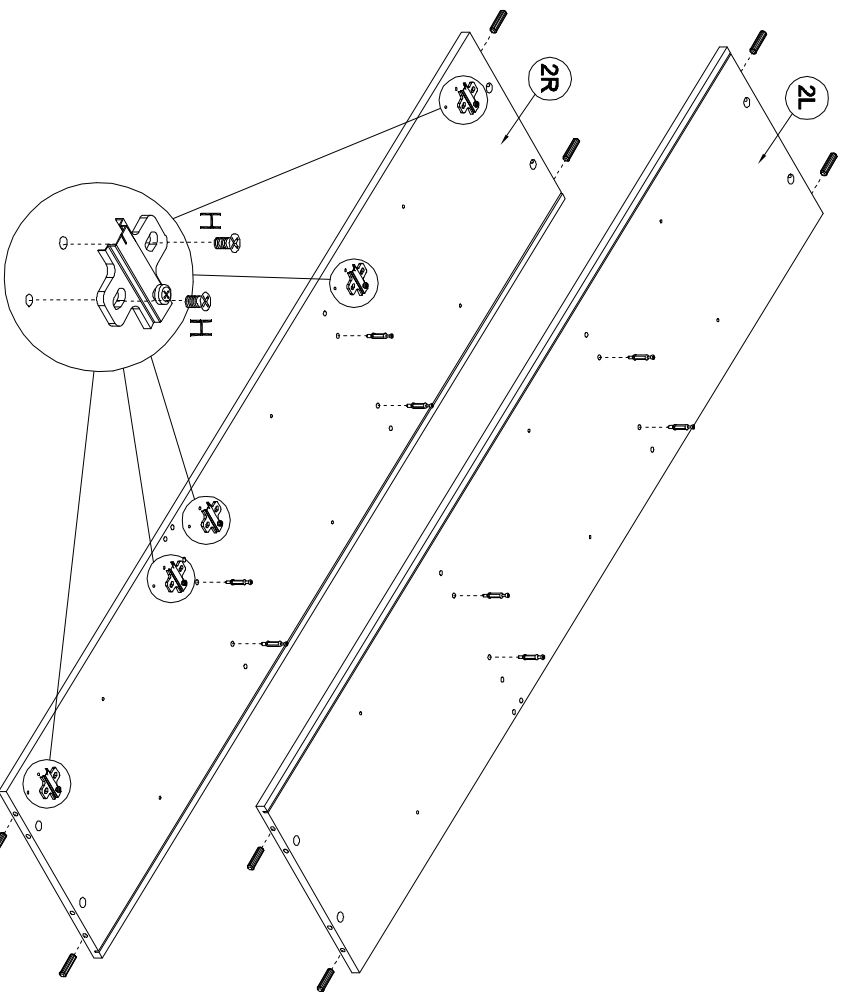
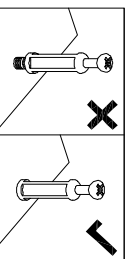
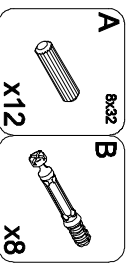
2



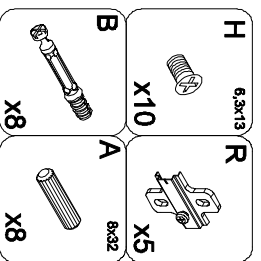
3

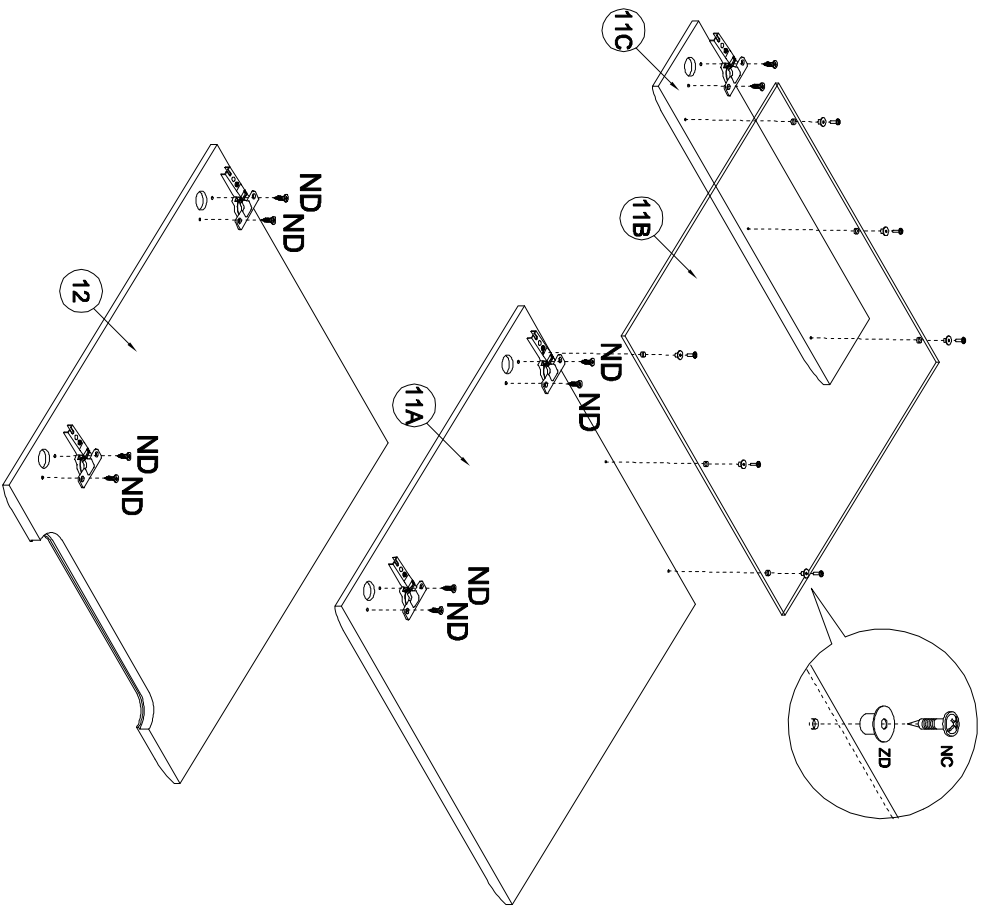


4

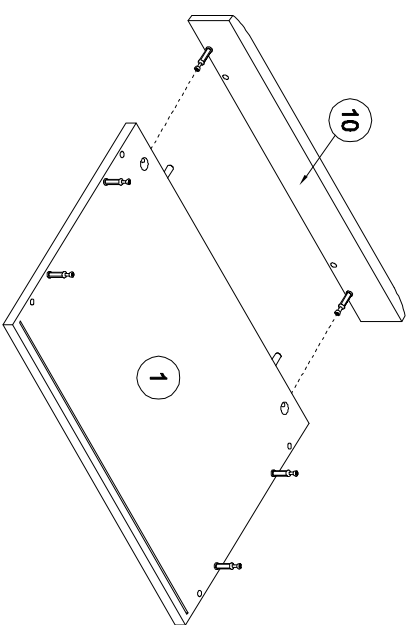
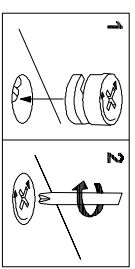


5

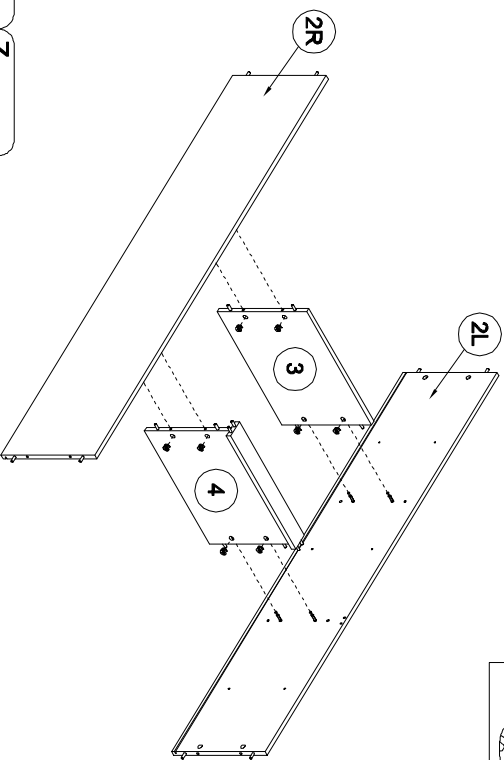
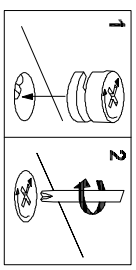




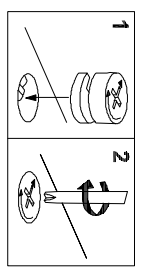
- | | |
|---------------------|------------------|
| ND
3.5x16
x10 | ZD |
| PC
x5 | NC
4x16
x6 |



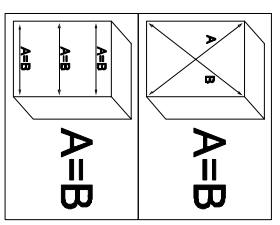
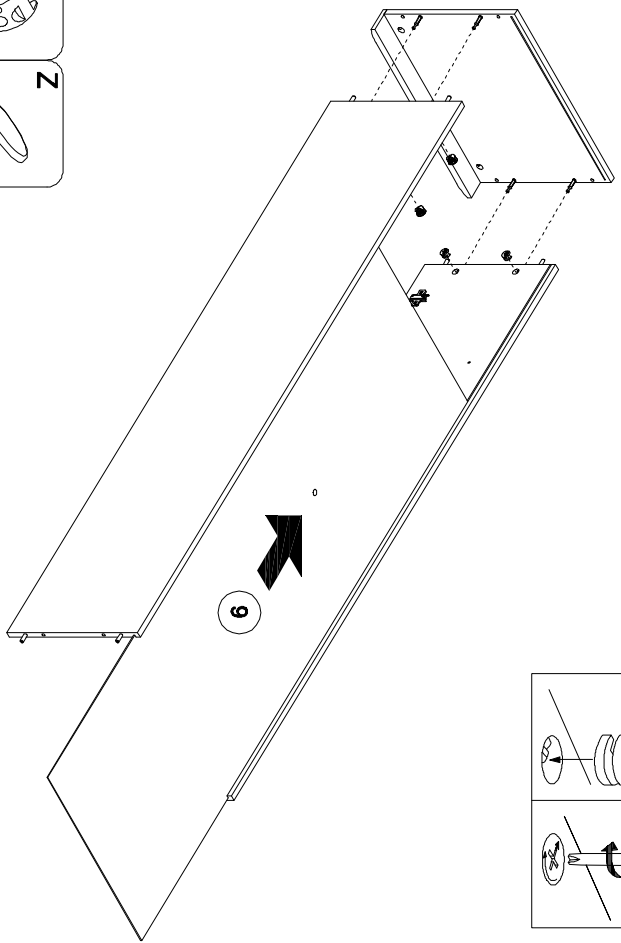
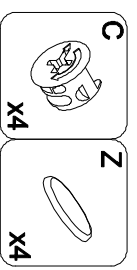
- | | |
|---------|---------|
| C
x2 | Z
x2 |
|---------|---------|



- | | |
|---------|---------|
| C
x8 | Z
x8 |
|---------|---------|



9



10

